

Specification Data

Power-Take-Off Drive

Sec. 110



# Self Priming Centrifugal Pump

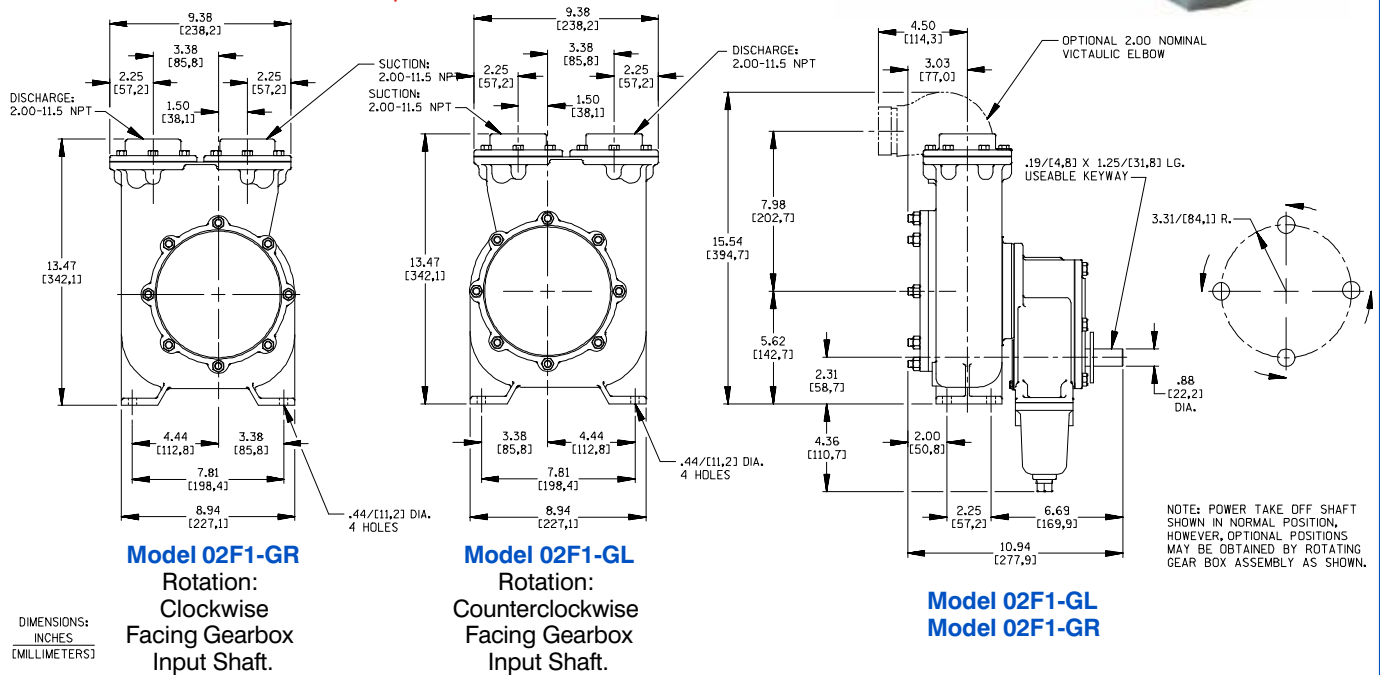
## Models 02F1-GL and 02F1-GR

### Size 2" x 2"

**PUMP SPECIFICATIONS**

- Size:** 2" x 2" (51 mm x 51 mm) NPT - Female.
- Casing:** Aluminum Alloy 356-T6.  
Maximum Operating Pressure 234 psi (1613 kPa).\*
- Enclosed Type, Six Vane Impeller:**  
Aluminum Alloy 356-T6 w/Gray Iron 30 Hub Insert.
- Pinion Shaft:** Alloy Steel 4320.
- Replaceable Wear Ring:** Copper Alloy C93200.
- Removable Cover Plate:** Gray Iron 30, 6 lbs. (3 kg).
- Seal:** Type 21, Mechanical, Self-Lubricated. Carbon Rotating Face. Ni-Resist Stationary Face. Fluorocarbon Elastomers (DuPont Viton® or Equivalent). Stainless Steel No. 18-8 Cage and Spring. Maximum Temperature of Liquid Pumped, 160°F (71°C).\*
- Seal Guard:** Brass Tubing ASTM B-135.
- Gearbox Housing:** Gray Iron 30.  
**Gearbox Lubrication:** SAE 90 Gear Oil.
- Gear:** Alloy Steel 4620.
- Gear Ratio:** 5.69:1 Increase.
- Bearings:** Open Single Row Ball.
- Flanges:** Gray Iron 30.
- Gaskets:** Buna-N w/Cork and Vegetable Fiber.
- Hardware:** Standard Plated Steel.
- Optional Equipment:** Victaulic™ Elbow.  
Victaulic is a Registered Trademark of Victaulic Company of America.

\*Consult Factory for Applications Exceeding Maximum Pressure and/or Temperature Indicated.



THE GORMAN-RUPP COMPANY • MANSFIELD, OHIO  
GORMAN-RUPP OF CANADA LIMITED • ST. THOMAS, ONTARIO, CANADA

www.grpumps.com

Specifications Subject to Change Without Notice

Printed in U.S.A.

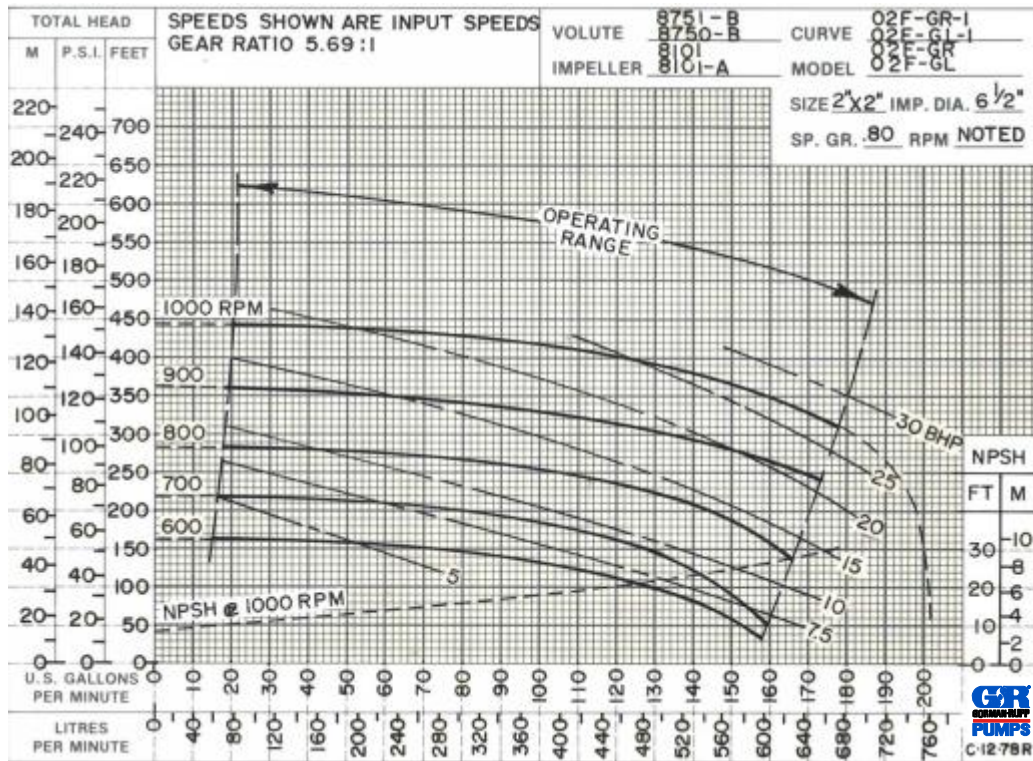
Specification Data

APPROXIMATE DIMENSIONS and WEIGHTS

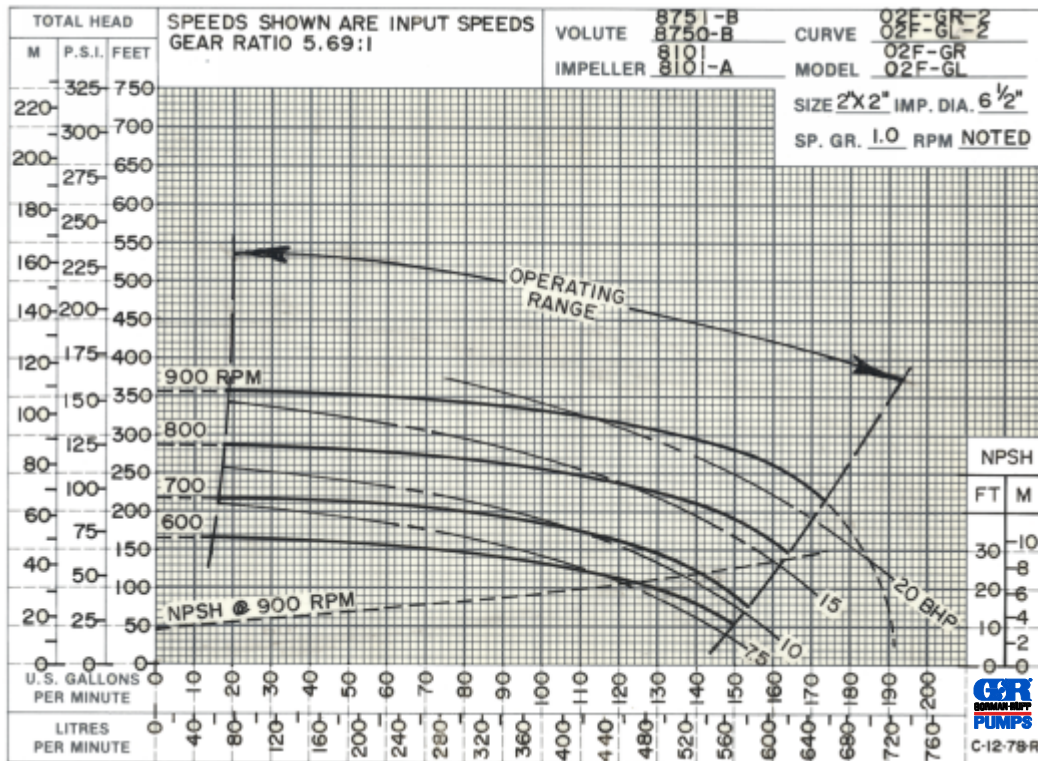
NET WEIGHT: 43 LBS. (19,5 KG.)  
SHIPPING WEIGHT: 53 LBS. (24 KG.)  
EXPORT CRATE SIZE: 2.2 CU. FT. (0,06 CU. M.)

SECTION 110, PAGE 550

PERFORMANCE BASED ON PETROLEUM



PERFORMANCE BASED ON WATER



THE GORMAN-RUPP COMPANY • MANSFIELD, OHIO

GORMAN-RUPP OF CANADA LIMITED • ST. THOMAS, ONTARIO, CANADA

Specifications Subject to Change Without Notice

Printed in U.S.A.