

Specification Data

Sec. 45

PAGE 565

APRIL 2011

A C E G

Diesel Engine Driven



Self Priming Centrifugal Pump

Models 13D-L70EE and 13D-L70EE S/G

Size 3" x 3"



18MTC

Total Head		Capacity Of Pump In U.S. Gallons Per Minute (GPM) At Continuous Performance				
P.S.I.	Feet	75	75	75	75	75
30.3	70	75	75	75	75	75
26.0	60	153	158	158	158	158
21.7	50	178	220	233	233	233
17.3	40	180	237	280	285	285
13.0	30	183	244	292	321	328
8.7	20	185	250	297	337	362
4.3	10	185	254	305	345	385
Suction Lift		25'	20'	15'	10'	5'



WARNING!
Do not use in explosive atmosphere or for pumping volatile flammable liquids.

PUMP SPECIFICATIONS

- Size:** 3" x 3" (76 mm x 76 mm) NPT - Female.
- Casing:** Aluminum Alloy 356-T6 w/Gray Iron 30 Cutwater Insert. Maximum Operating Pressure 55 psi (379 kPa).*
- Semi-Open Type, Two Vane Impeller:** Ductile Iron 65-45-12. Handles 1 1/2" (38,1 mm) Diameter Spherical Solids.
- Replaceable Wear Plate:** Carbon Steel 1026.
- Removable Cover Plate:** Aluminum Alloy 356-T6; 4 lbs. (1,8 kg).
- Intermediate Bracket:** Aluminum Alloy 356-T6.
- Seal:** Double, Grease-Lubricated with Spring-Loaded Grease Cup. Sintered Bronze Stationary Seal Seats. Steel Rotating Faces. Neoprene Packing Rings. Maximum Temperature of Liquid Pumped 110°F (43°C). Maximum Suction Pressure 10 psi (69 kPa).*
- Seal Liner:** Copper Alloy C26000.
- Flap Valve:** Buna-N w/Nylon Reinforcement; Steel and Brass.
- Suction Flange:** Aluminum Alloy 356-T6.
- Gaskets:** Cork w/Nitrile Binder (NC710).
- O-Rings:** Buna-N.
- Hardware:** Standard Plated Steel.
- Roll Cage with Rubber Feet.**
- Strainer.**
- 90° Ductile Iron Discharge Elbow.**

Optional Equipment: Wheel Kit w/Semi-Pneumatic Tires.

**Consult Factory for Applications Exceeding Maximum Pressure and/or Temperature Indicated.*

ENGINE SPECIFICATIONS

- Model:** Yanmar L70EE.
- Type:** Single Cylinder, Four Cycle, Air Cooled, Diesel Engine.
- Displacement:** 18.7 Cu. In. (306 cc).
- Governor:** Variable Speed, Engine Mounted.
- Lubrication:** Forced Circulation.
- Air Cleaner:** Dry Type.
- Oil Reservoir:** 37 U.S. Oz. (1,1 liter).
- Fuel Tank:**
 - (13D-L70EE) 0.92 U.S. Gal. (3,5 liters).
 - (13D-L70EE S/G) 1.45 U.S. Gal. (5,5 liters).
- Full Load Operating Time:**
 - (13D-L70EE) 2.2 Hours.
 - (13D-L70EE S/G) 3.4 Hours.
- Starter:**
 - (13D-L70EE) Rope Rewind.
 - (13D-L70EE S/G) 12 Volt Electric.

Standard Equipment: Exhaust Silencer Muffler w/Guard. 90° Exhaust Deflector. Hand Throttle and Stop Control.

YANMAR PUBLISHED PERFORMANCE:
Maximum Net Continuous B.H.P.
5.8 (4,3 kW) @ 3600 RPM



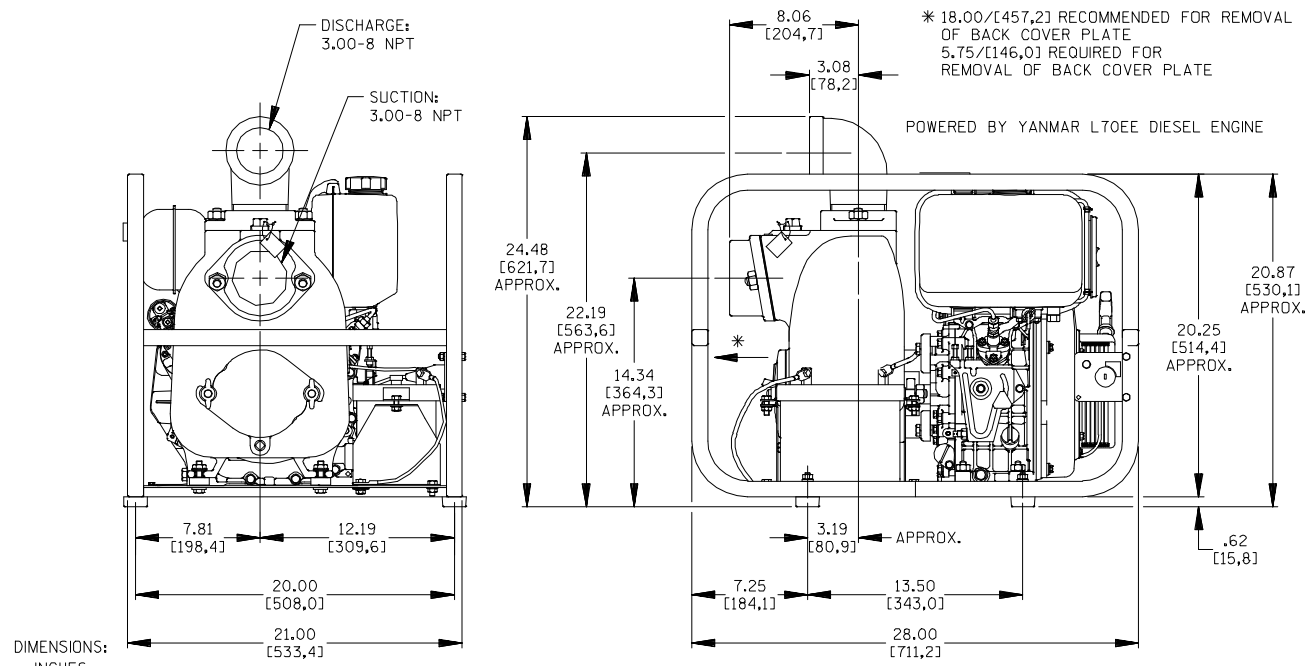
THE GORMAN-RUPP COMPANY • MANSFIELD, OHIO

GORMAN-RUPP OF CANADA LIMITED • ST. THOMAS, ONTARIO, CANADA

www.grpumps.com
Specifications Subject to Change Without Notice

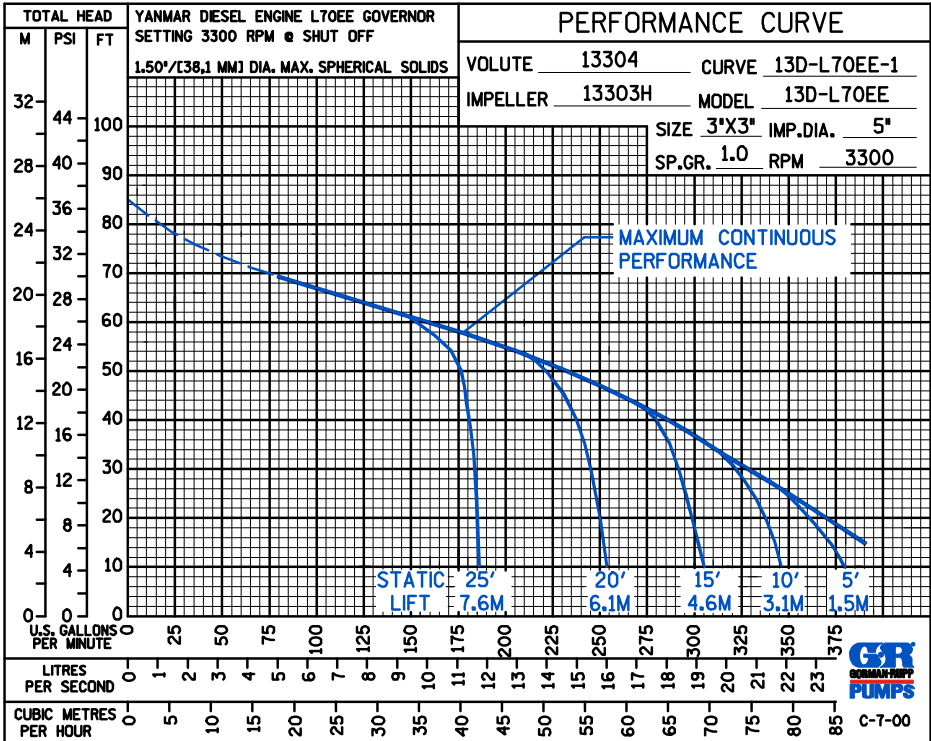
Printed in U.S.A.

Specification Data	APPROXIMATE DIMENSIONS and WEIGHTS	13D-L70EE	13D-L70EE S/G
		NET WEIGHT: 119 LBS. (54 KG.)	139 LBS. (63 KG.)
SECTION 45, PAGE 565		SHIPPING WEIGHT: 124 LBS. (56 KG.)	144 LBS. (65 KG.)
		EXPORT CRATE: 8 CU. FT. (0,2 CU. M.)	
		WHEEL KIT ADD WEIGHT: 25 LBS. (11,3 KG.)	
		SHIPPING CRATE (SEPARATE): 3 CU. FT. (0,1 CU. M.)	



MODEL 13D-L70EE S/G SHOWN

DIMENSIONS:
INCHES
[MILLIMETERS]



THE GORMAN-RUPP COMPANY • MANSFIELD, OHIO

GORMAN-RUPP OF CANADA LIMITED • ST. THOMAS, ONTARIO, CANADA

Specifications Subject to Change Without Notice

Printed in U.S.A.